

The background is a light blue gradient with several realistic water droplets of various sizes scattered across the surface. The droplets have highlights and shadows, giving them a three-dimensional appearance.

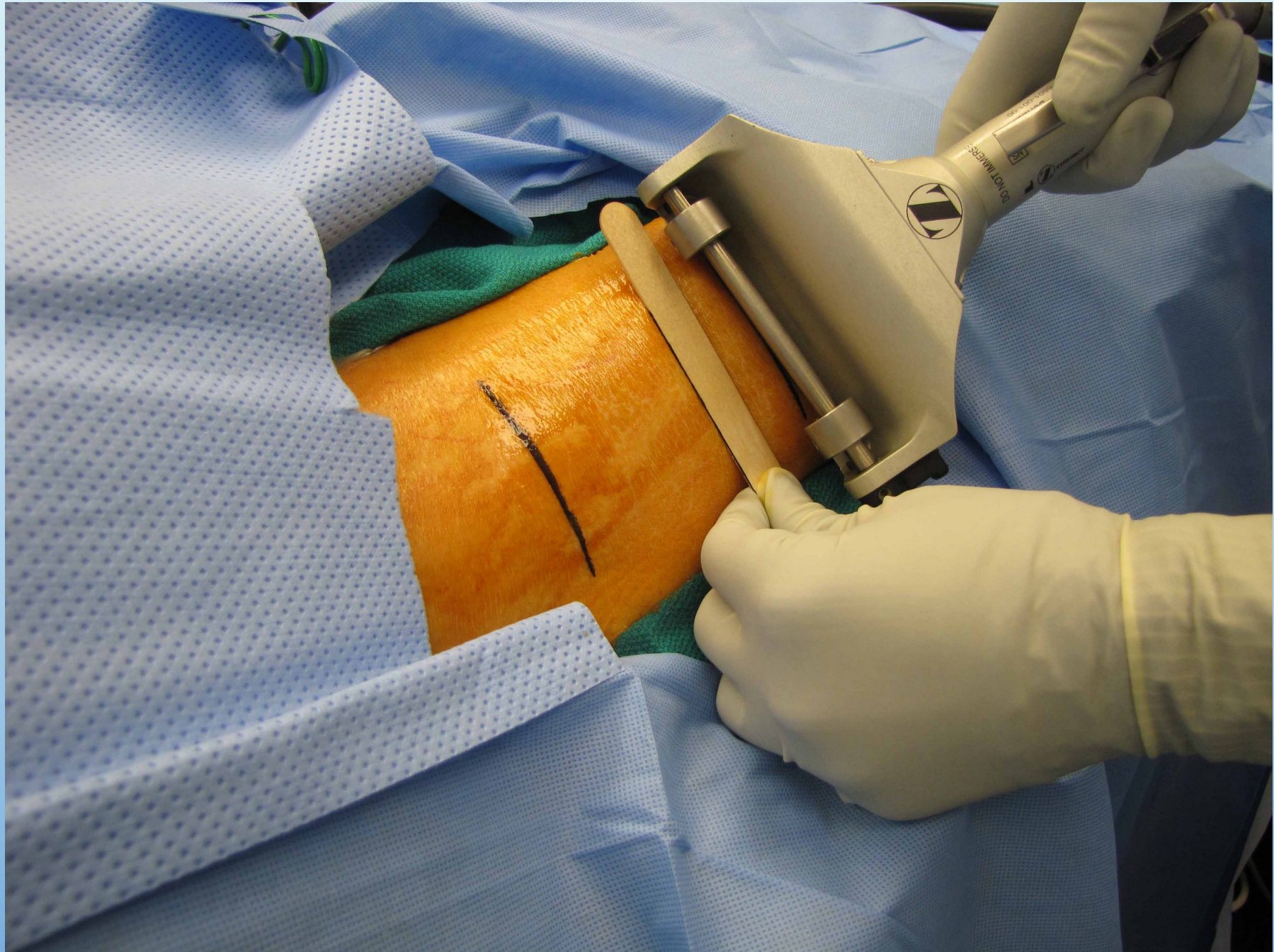
# SKIN SUBSTITUTES – EVOLVING PARADIGMS IN PLASTIC SURGERY

DR. SANKALP GOEL





**SKIN COVER**







# CONTRACTS





**TEXTURE AND COLOUR MATCH IS POOR**



# STABILITY

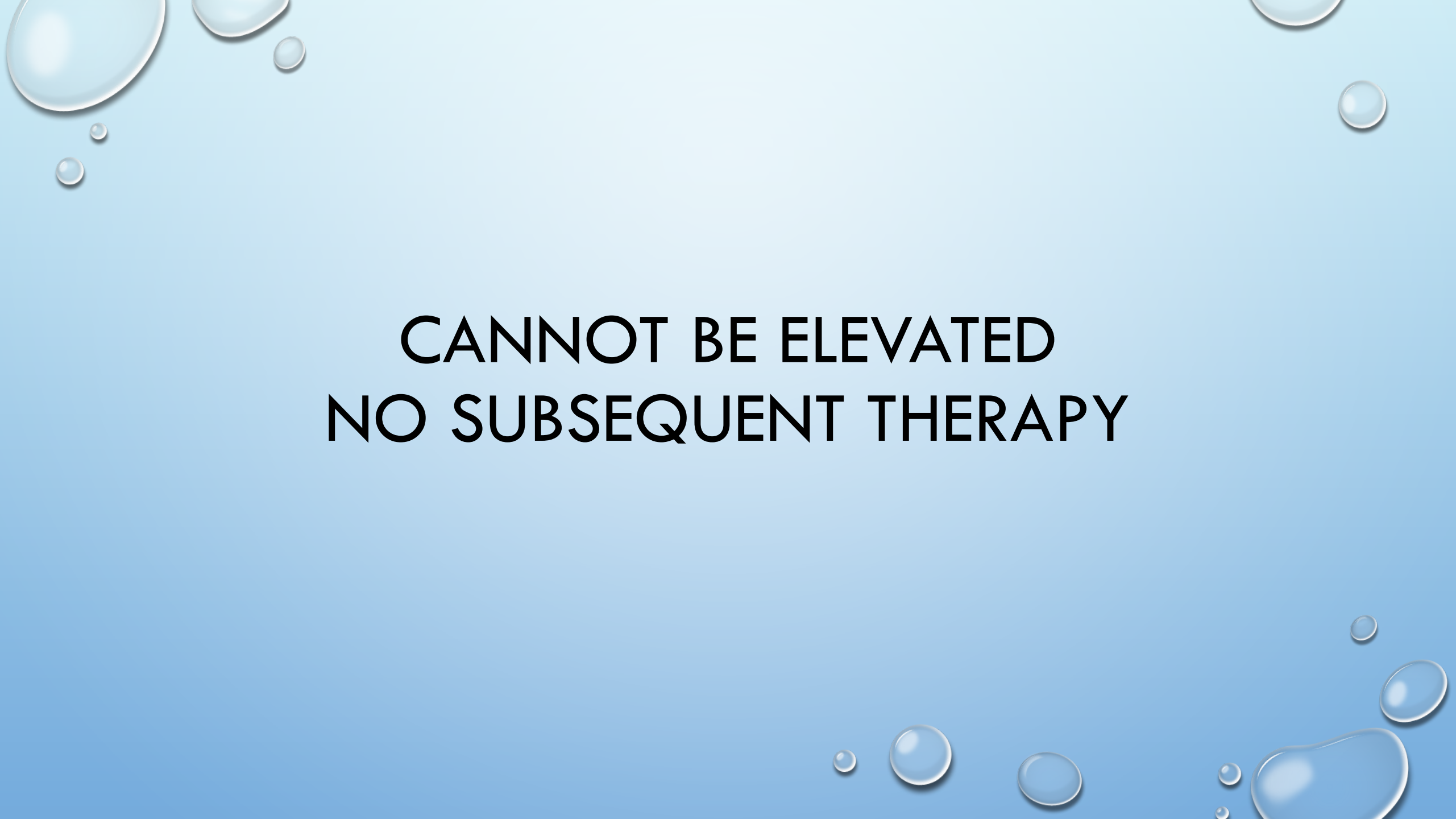


# ADHERENT



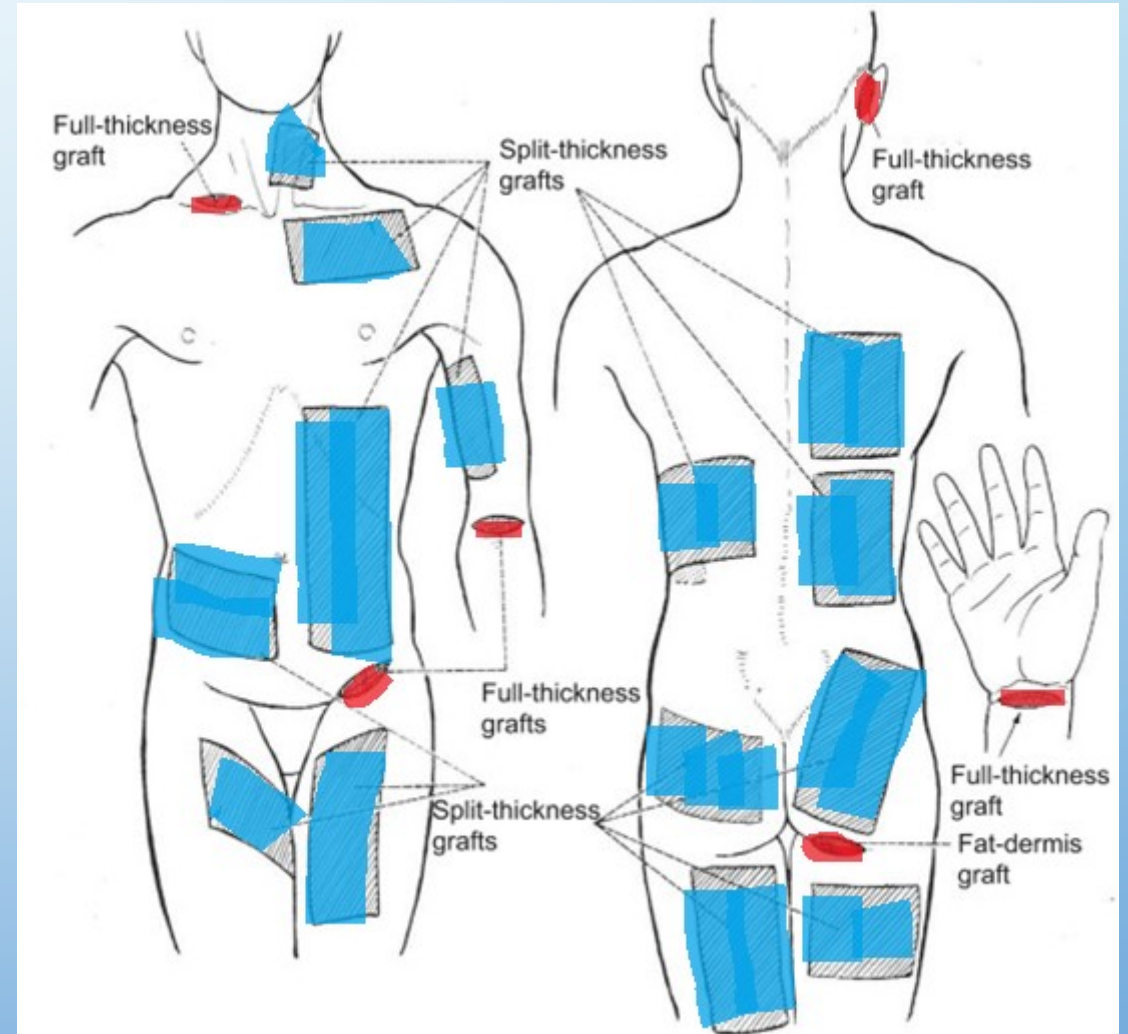
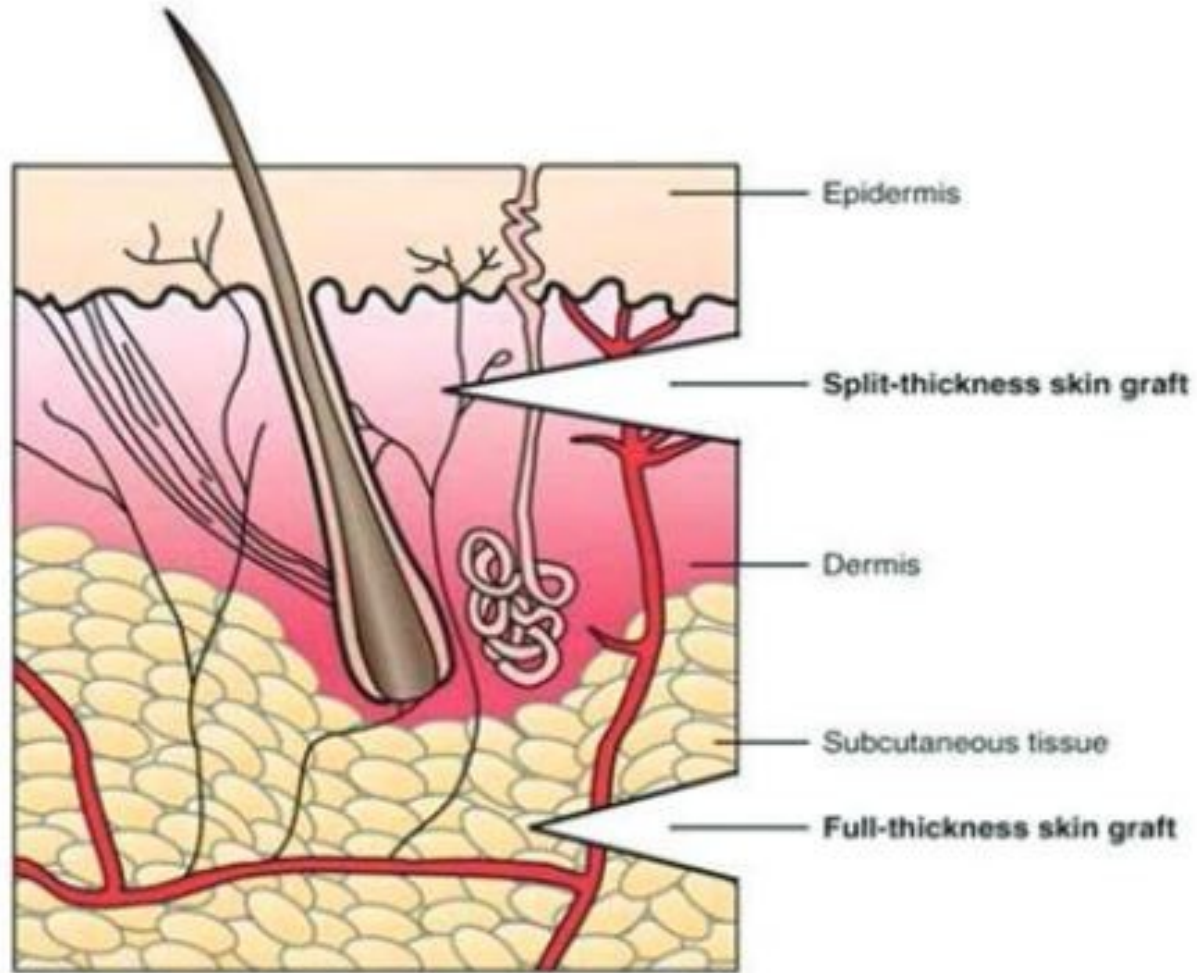
**CANNOT COVER POORLY VASCULARIZED BED,  
HARDWARE, JOINT**



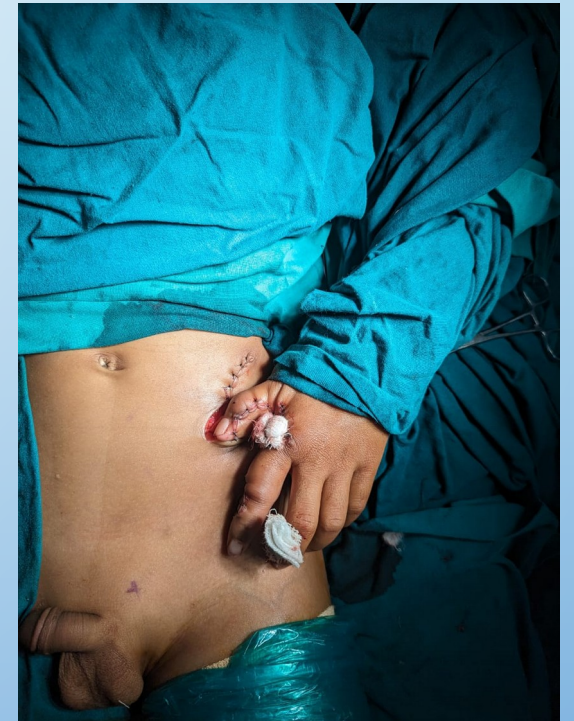
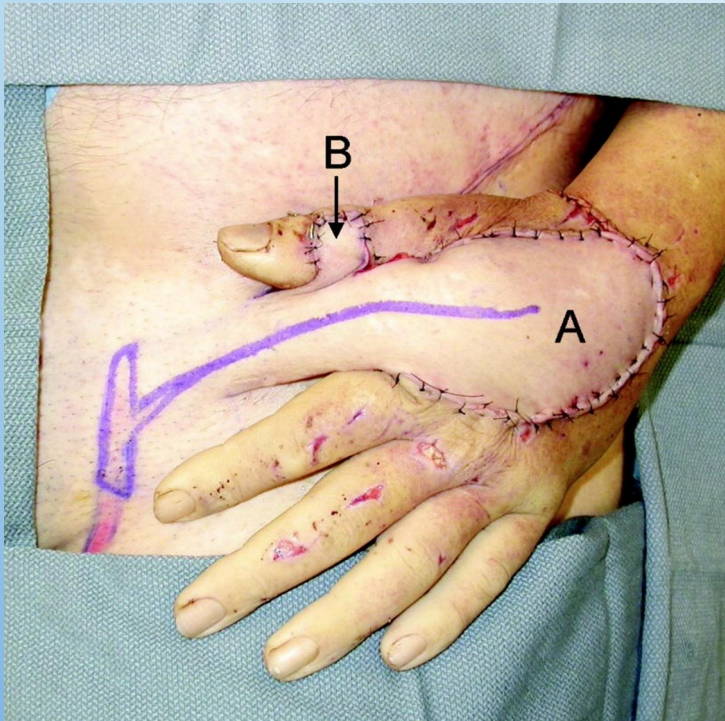
The background is a light blue gradient. There are several realistic-looking water droplets of various sizes in the corners: top-left, top-right, and bottom-right. The text is centered in the middle of the page.

**CANNOT BE ELEVATED  
NO SUBSEQUENT THERAPY**

# FTSG?



FLAP?



FREE FLAP?

Epidermis is Life....

...Dermis is  
quality of Life





# Skin Substitutes

(Dermal Regenerative Template)





VIDÉO POUR DIFFUSION EN EUROPE, AU MOYEN-ORIENT & EN AFRIQUE UNIQUEMENT

UTILITY?

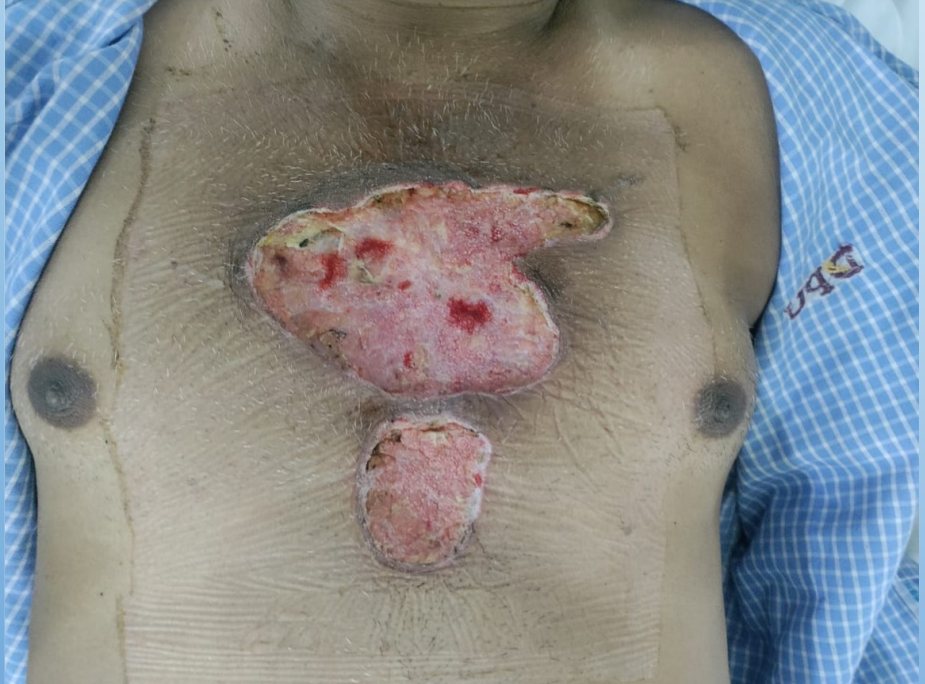












IS IT A PANACEA?

NO!







THE FUTURE?